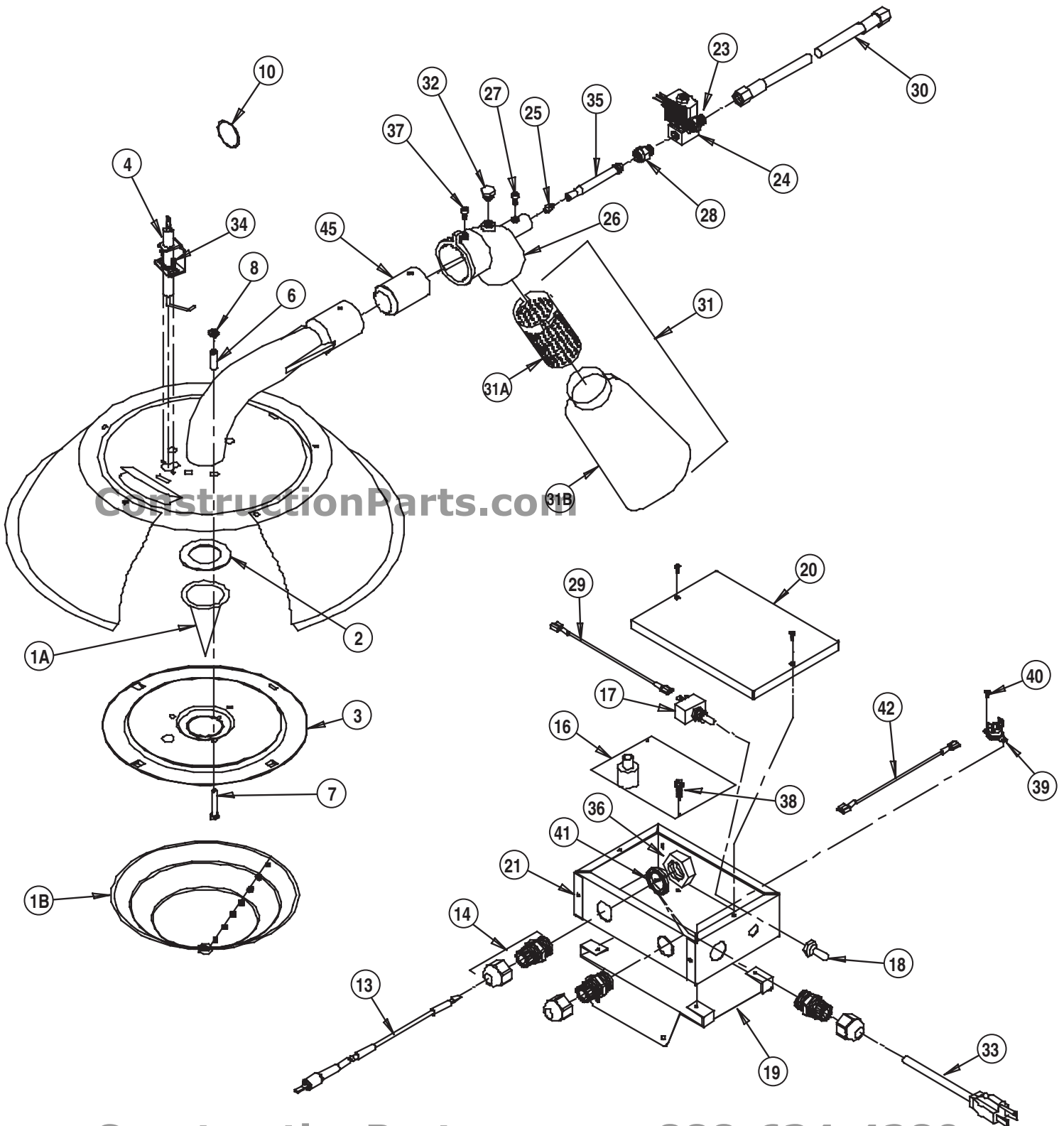


Parts Identification

InfraConic I-40 SL
Model I-40C

888-634-4289

PARTS SCHEMATIC



ConstructionParts.com

888-634-4289

PARTS LIST

Item	Description	Part Number
1	Inner Cone	09557
	Outer Cone	24543
	Combustion Cone Kit with Gasket	24213
2	Gasket	09560
3	Plate, Burner	23201-04
4	Igniter Kit	24050
6	Spacer	09568
7	Screw 10-32 x 1 1/2	23636
8	Nut 10-32	09578
10	Key Ring	09620
13	Lead, Igniter w/ Boot	23989
14	Connector, Liquid Tight	08948
16	Control, Direct Spark Ignition	22715
17	Switch, On/Off	22714
18	Boot, On/Off Switch	09916
19	Bracket, Control Box	23987
20	Control Box Cover w/ Gasket	23986
21	Control Box Bottom	23985
22	Bushing	01544
23	Adapter, Hose	23789
24	Valve, Gas Control w/ Electrical Leads and Screen	23729
25	Orifice Burner	Propane Gas 23213 Natural Gas 23212
26	Injector Body w/ Air Register Plate	Propane Gas 23337 Natural Gas 23923
27	Retaining Screw for Injector Tube	09572
28	Adapter 1/8 NPT x 1/8 BSP	23707
29	Lead, Black, On/Off Switch to Ignition Control	22610
30	Hose, Gas	1/4 in. x 6 ft. Rigid x Swivel, Poultry 20495 1/4 in. x 10 ft. Rigid x Swivel, Poultry 20496 1/4 in. x 12 ft. Rigid x Swivel, Poultry 20497 1/4 in. x 6 ft. Swivel Both Ends, Swine 20499 1/4 in. x 10 ft. Swivel Both Ends, Swine 20242 1/4 in. x 15 ft. Swivel Both Ends, Swine 20500
31	Filter Kit	20428
31A	Adapter	23931
31B	Filter	23953
32	Plug	20358
33	Cord, Power	22704
34	Screw, Igniter Mounting	06658
35	Tube, Injector	09562
36	Lock Nut	08948
37	Screw, Injector Body	09575
38	Screw, Direct Spark Ignition	02330
39	High Limit Switch, Manual Reset	23148
40	Screw, High Limit Switch	22785
41	Gasket, Liquid Tight	22565
42	Wire, High Limit Switch	22610
43	Quick Coupling Kit, Female Coupling and Shut-Off (Not Illustrated)	21335
	Consisting Of:	
	Shut-Off Valve	05548
	Nipple, 1/4 in. Close	01142
	Coupling, Quick Disconnect	21328
	Bushing, 1/2 x 1/4	01519
44	Kit, 1/8 NPT Fitting (Not Illustrated)	21406
45	Venturi Insert	24465