



Boss™ 400 DF
 Boss™ 1000 DF
 Construction Heater

Model	Btu/h/kW	Fuel
CH400	400,000 / 117.2	Dual Fuel*
CH1000	1,000,000 / 293	

*Propane Vapor Withdrawal and Natural Gas

View this manual online at www.lbwhite.com

Attention

This heater has been tested and evaluated by the Omni Test Laboratories in accordance with the requirements of Standard ANSI Z83.7 • CSA 2.14 and is listed and approved as a direct gas-fired forced-air construction heater with application for the temporary heating of buildings under construction, alteration, or repair. CHECK WITH YOUR LOCAL FIRE SAFETY AUTHORITY, YOUR LOCAL FUEL GAS SUPPLIER, OR THE L.B. WHITE COMPANY IF YOU HAVE QUESTIONS REGARDING APPLICATIONS.



North
American
Made



Report No: 0545GH003S



Congratulations!

You have purchased the finest agricultural building heater available. Your new L.B. White heater incorporates the benefits from the most experienced manufacturer of heating products using state-of-the-art technology.

We, at L.B. White, thank you for your confidence in our products and welcome any suggestions or comments you may have...contact us at 1-(800)-345-7200, or email us at customerservice@lbwhite.com.

NOTICE

The herein installation instructions are the L.B. White Co. LLC suggested recommendations and guidelines for temporary or permanent installation of the L.B. White Co. LLC heaters. Local, state, and electrical and safety code requirements supersede these guidelines. In the absence of local codes, see page 7 for installation in the U.S. or Canada.

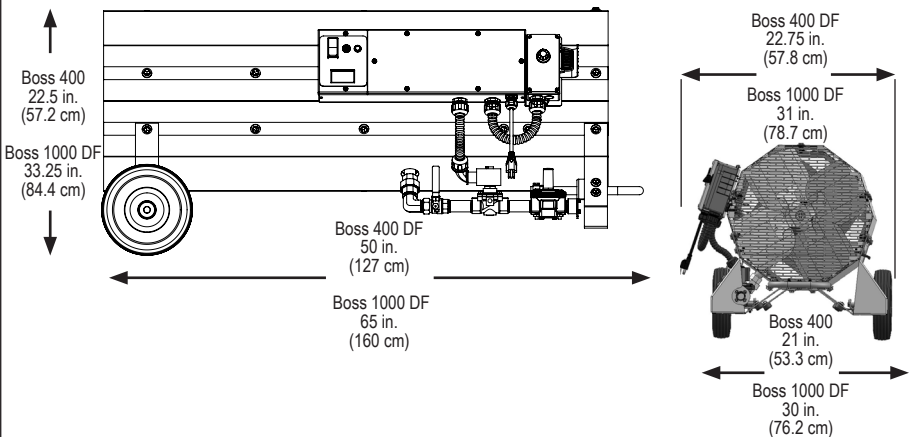
SEE ASSEMBLY
 INSTRUCTIONS
 INSIDE

Please refer to important
 elevation information on
 inside cover.

Specifications

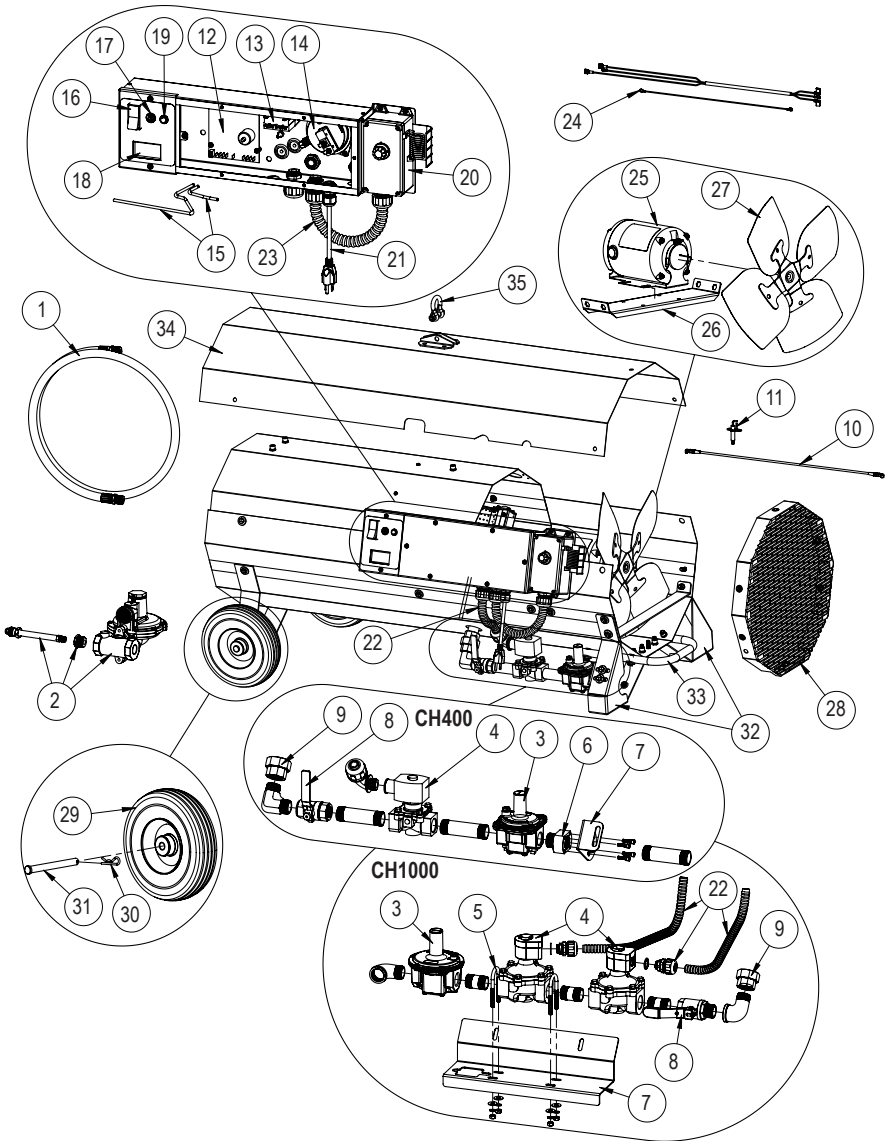
		CH400		CH1000	
		Propane Gas	Natural Gas	Propane Gas	Natural Gas
Maximum Input (Btuh/kW)		400,000 / 117.23		1,000,000 / 293	
Inlet Gas Supply Pressure Acceptable at the Heater Inlet for Input Adjustment (In. W.C. / kPa)	Max	13.5 / 3.36			
	Min	7.0 / 1.74			
Burner Manifold Pressure (In. W.C. / kPa)		6.0 / 1.49	5.6 / 1.39	6.2 / 1.54	5.6 / 1.39
Air Flow (cfm/m ³ /h)		2,500 / 4,248		5,000 / 8,495	
Blower Outlet Temperature (Rise over ambient -°F / °C)		400 / 260			
Fuel Consumption Per Hour		18.5 lbs./8.38 kg	400 ft. ³ /11.42 m ³	46.3 lbs./21 kg	1000 ft. ³ /2100 m ³
		4.4 gal./ 16.7 L	--	11 gal./ 41.6 L	--
Motor Characteristics (H.P. / watts)		1/2 / 373		1 / 746	
Electrical Supply (Volts/Hz/Phase)		120 / 60 / 1			
Amp Draw	Starting	27.2		23.2	
	Continuous Operation	7.1		8.4	
Dimensions		See Fig. 1			
Minimum Safe Distances From Nearest Combustible Materials (feet/meters)	TOP	5 / 1.5		4 / 1.2	
	SIDES	2 / .61		2 / .6	
	REAR	2 / .61		2 / .6	
	BLOWER OUTLET	12 / 3.66		16 / 4.9	
	GAS SUPPLY	Propane Gas Supply - 6 ft. / U.S, 10 ft./3.05 m Canada Natural Gas Supply - N/A			
Minimum Operating Temperature		-20 ° F / -29 ° C			
Net Weight (lbs. / kg)		125 / 56.7		300 / 136.1	

FIG. 1



Service Parts Identification Schematic

CH400 SHOWN



Item	Description	CH400	CH1000
1	Gas hose, ¾ x 15 ft. (19 mm x 4.6 m)*	500-25965	--
	Gas hose, 1 in. x 15 ft. (2.54 cm x 4.6 m)*	--	500-132047
2	Regulator (DF)*	500-25141	--
	Regulator (LP - 1st stage)*	--	500-132235
	Regulator (LP- 2nd stage)*	--	500-132046
	Regulator NG (2 PSIG min. inlet)*	--	500-132136
3	Regulator, low pressure	573962	573972
4	Solenoid valve	573961	573980
5	U-bolts w/nuts	--	573983
6	Adapter, ¾ in. in/out	573960	--
7	Bracket, gas train	573963	573988
8	Fuel selector valve	573964	573981
9	Union	573959	573979
10	Ignition cable		573993
11	Igniter		573196
12	Ignition control		571344
13	Relay		570221
14	Differential air pressure switch	573949	574269
15	Tubes, differential air pressure switch	573958	573998
16	Selector switch (heat/off/vent)		500-26385
17	Circuit breaker, manual reset		573948
18	Voltage meter		573947
19	Red status light		573564
20	Thermostat		500-09381
21	Power cord		573984
22	Conduit, solenoid to control box	573985	573987
23	Conduit, thermostat		573986
24	Wiring harness kit, complete	573952	573994
25	Motor, ½ HP., 115 VAC	573953	--
	Motor, 1 HP., 115 VAC	--	573982
26	Motor mount	573968	573978
27	Fan blade, 16 in. diameter	573956	--
	Fan blade, 24 in. diameter	--	573977
28	Fan guard	573957	573976
29	Wheel	573992	573991
30	Cotter pin		573954

* Must be purchased separately.

Item	Description	CH400	CH1000
31	Clevis pin	573955	
32	Support	573966	573975
33	Handle (CH400 DF)	573951	--
34	Case top, outer	573965	573979
35	Handle, Sliding (CH1000 DF)	--	574393**

** Not illustrated

Manual Rev./Changes

Date	Rev.	Revision Change	Description
6/3/2022	B	No	Added revision table, update CH1000 air pressure switch service number, ECO3931.
9/6/2022	B	No	Added installation notice statement
9/9/2022	B	No	CH1000 DF handles changed to sliding handles